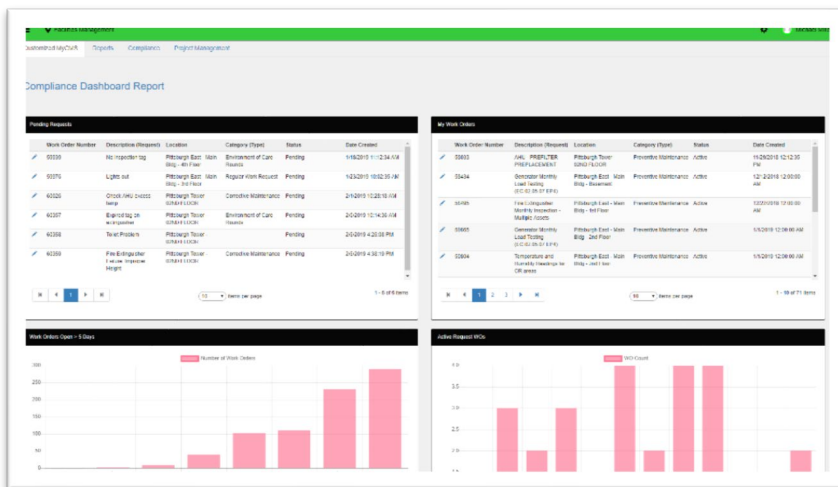




CMS automatically builds Accreditation Compliance reporting from your daily activities.



- **Offered as a hosted application**, IT requirements for system upgrades and maintenance are eliminated and provide the end-users 24/7 availability from anywhere with internet access.
- **Designed for the end user**, CMS is easy to use and learn, with a consistent look and feel that will enable your employees to be more efficient with less training time.
- **Convenient, single-screen views** in each core module enable users to quickly view work order history, upcoming PMs, labor charges and material charges on a single screen. Portals allow the user to access the information they need without the need to click through multiple screens and components of the application.
- **Simple licensing**; unlimited logins, licenses and custom request forms with no additional fees for mobile, projects, surveys, and other capabilities.
- **Customize dashboards and views** based on user role. Unlimited user defined fields can be configured for each component of CMS to streamline data entry and accuracy.

CMS Advantages

Work Orders

- Set defaults to quickly create and complete work orders
- Easy to use CMS Request App for handheld work requests
- Online service request forms with email updates to requesters

Assets

- Quickly access full equipment histories

Preventive Maintenance

- Full support for your AEM and OEM PM procedures
- Procedure readings allow tracking and trending of values over time and can be configured to automatically trigger corrective action

Reports

- On-demand and automated email reports assist with compliance, productivity, and management of your facility

Materials

- Maintain an accurate parts inventory and forecast needed materials for upcoming maintenance

Users, Admin, and more

- Control system access and preferences with easily configured settings and controls



FSIservices.com

400 Penn Center Blvd., Suite 552, Pittsburgh, PA 15235
P: 412.567.4070 F: 412.235.0382

