

# BUILDING DOCUMENTATION

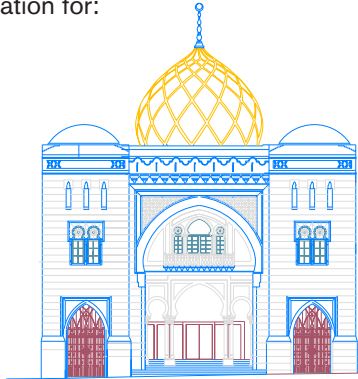
As-built drawings with the details needed to assist you in managing your facility

BETTER TOOLS,  
ACCURATE DATA,  
A SIMPLE DECISION

## Reliable, accurate documentation.

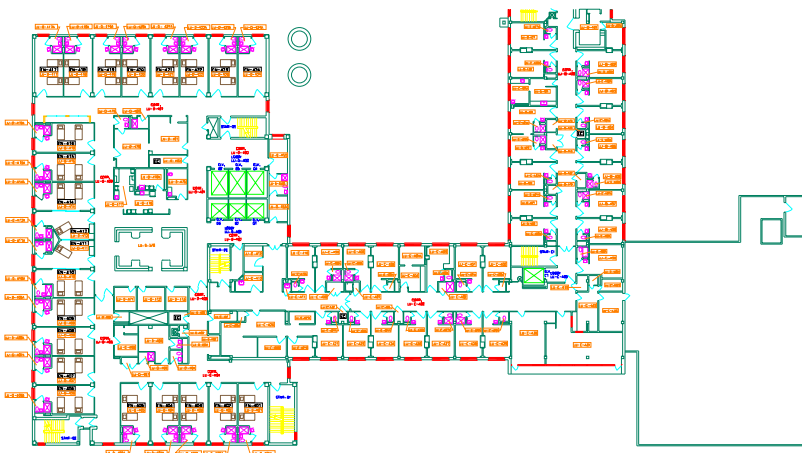
Facilities Survey Inc. has over fifty years of experience producing commercial construction documentation for:

- Hospitals
- Universities
- Commercial office buildings and retail spaces
- Government agencies
- Educational facilities
- Hotels
- Historical buildings
- Theaters
- Manufacturing and warehousing facilities



Our associates utilize advanced laser measuring devices and photographic records to produce high quality measured drawings.

We provide our customers a quality product in a timely manner. After updating your documentation, Facilities Survey can provide hosting services to store your drawings on a secure site. You are able to provide access to architects or contractors as needed, always providing the most recent drawings and eliminating printing costs. Our associates deliver drawings that are an accurate representation of the existing condition with the precise details that are necessary for your project.



## ACCURATE REPRESENTATIONS OF EXISTING CONDITIONS

### LIFE SAFETY DRAWINGS

- We can prepare drawings to show all fire safety provisions in your facility to assist you with important maintenance tasks. It's much easier for you and your contractors to look at a CAD drawing to see where equipment is located than to read it on a schedule. By clearly marking the fire and smoke resistant partitions and doors on a drawing, it's easy to see the ones that need to be maintained – if they are not marked would you know where fire and smoke resistant doors are required?

### AS-BUILT FLOOR PLANS

- Interior and exterior walls, windows, doors, openings, skylights, exposed beams, stairs, soffits, built-ins, plumbing fixtures, HVAC registers and accessible measurable spaces.

### MEDICAL GAS PLANS

- Documents the complete medical gas distribution system including piping valves, alarm panels, tank farms and piping.

### ELEVATIONS

- Detailed illustration of exterior ornamentation, siding, attached structures, equipment, trim, doors and windows. Interior elevations illustrate wall height, windows, doors and built-in components.

### SECTIONS

- Cut through view of the building from the foundation to the roof. Detail may include walls, windows, doors, floors, ceilings and identifiable structural elements.

### ELECTRONIC CONVERSION OF PAPER FILES

- Transfer of existing blueprints and drawings to CAD.

### HOSTING

- Online application to view, store and download your drawings.

## CLIENTS

- Carnegie Mellon University
- The Cleveland Clinic
- Fox Theater—Atlanta, GA
- Michael Baker Engineering
- The Ohio State University
- Shull Architects



**Facilities Survey Inc.**

161 Penhurst Drive, Pittsburgh, PA 15235  
Phone: 412.567.4070 • Fax: 206-495-0891  
www.FacilitiesSurvey.com